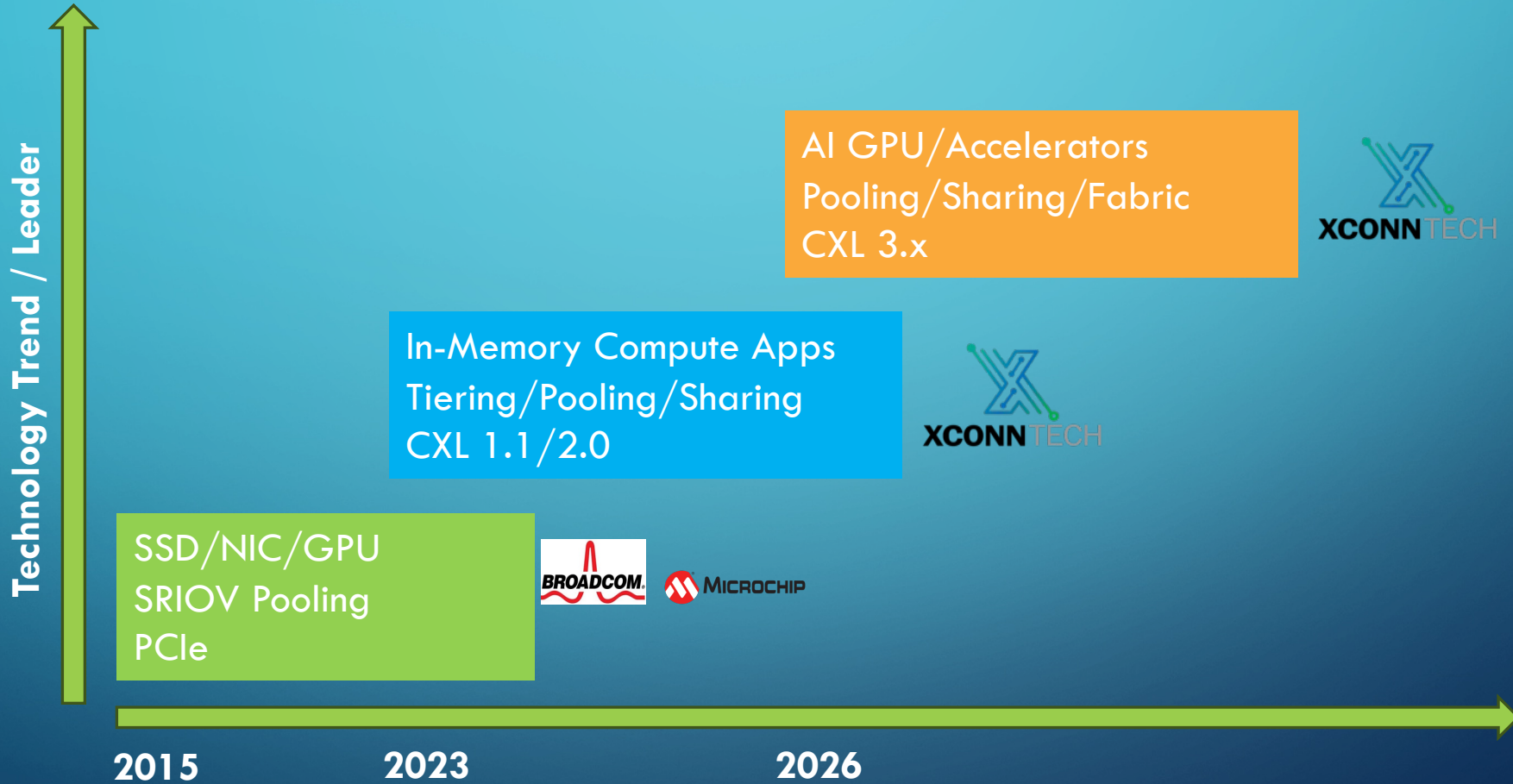




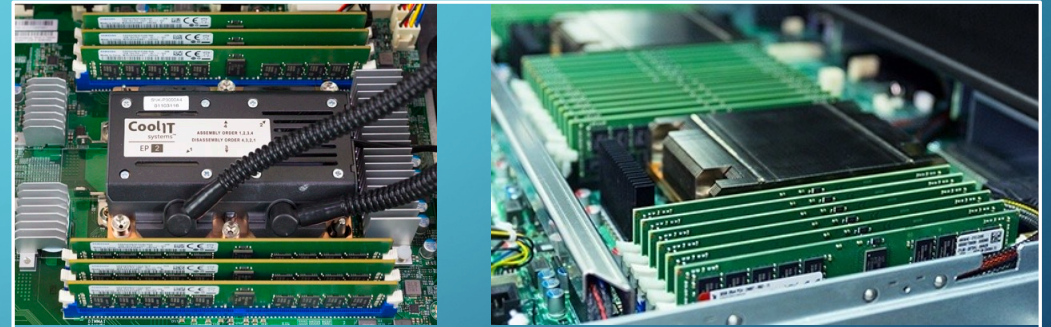
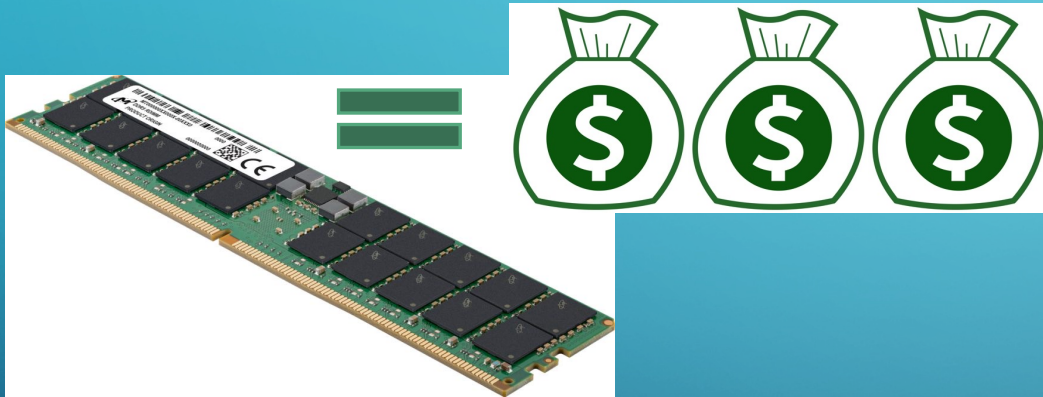
XCONN TECHNOLOGIES INC.

- HIGH PERFORMANCE CXL/PCIE SWITCH FOR
IN-MEMORY AND AI COMPUTING

COMPOSABILITY AND DISAGGREGATION ENABLED BY SWITCHES

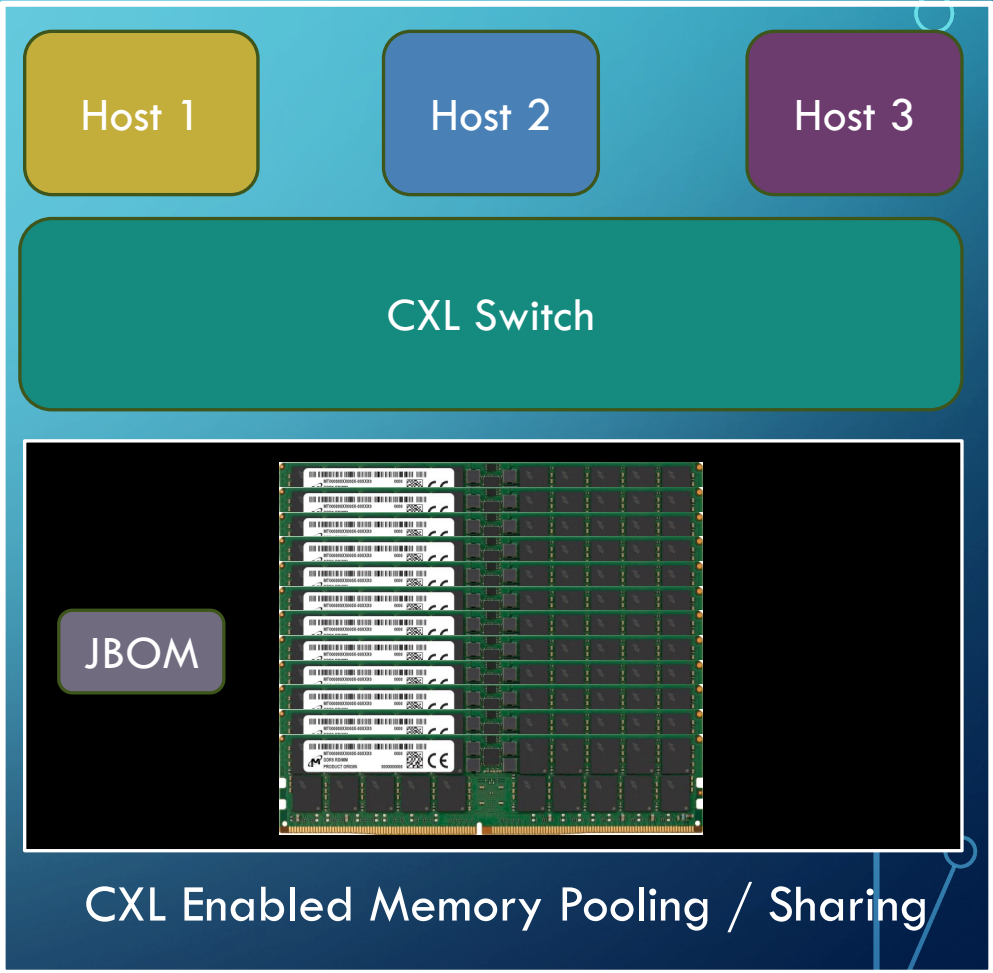
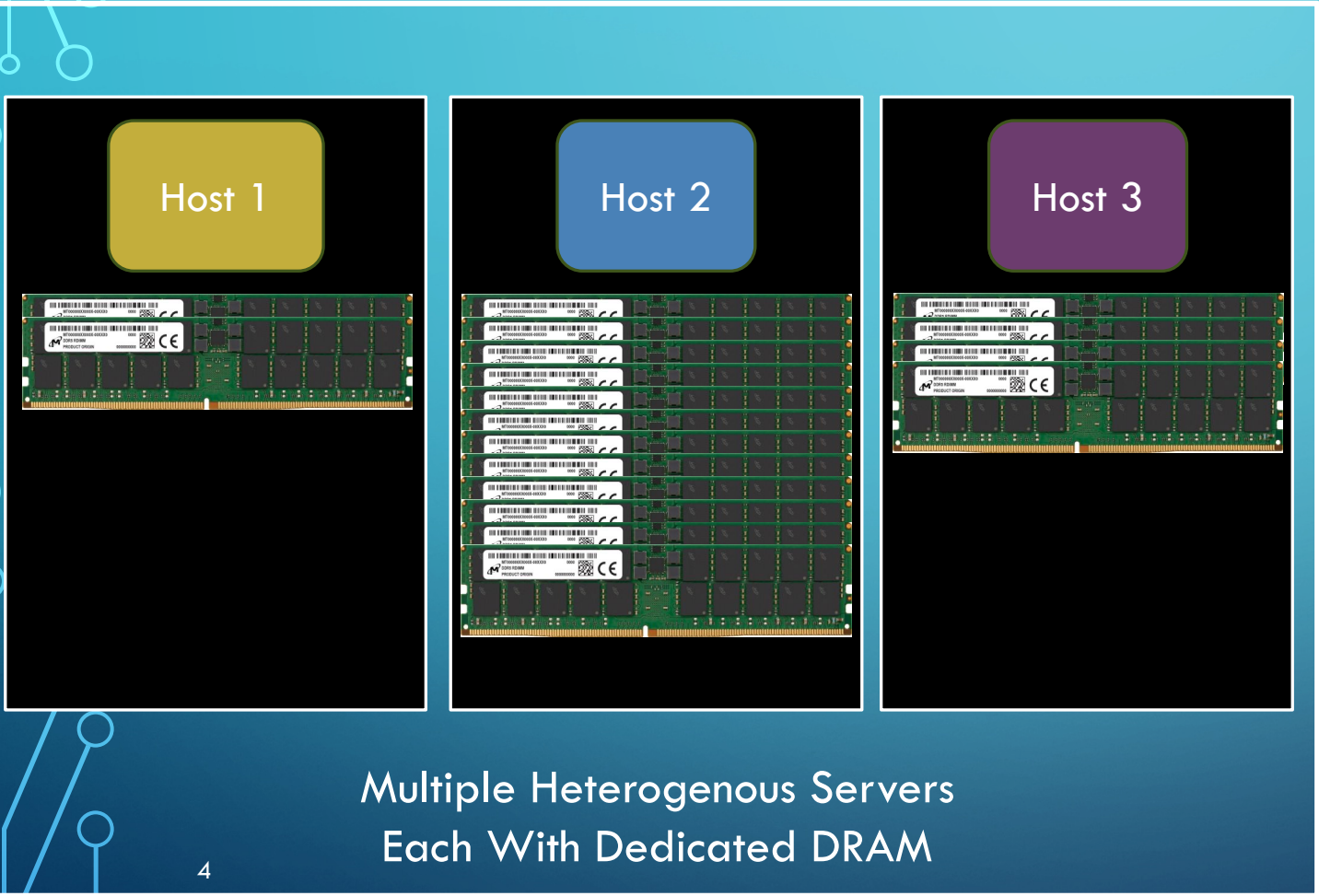


DRAM IS AN EXPENSIVE RESOURCE : COST OPTIMIZATION TODAY DRIVES HETEROGENOUS FLEET DEPLOYMENT



Different Applications Require
Different Amounts of DRAM

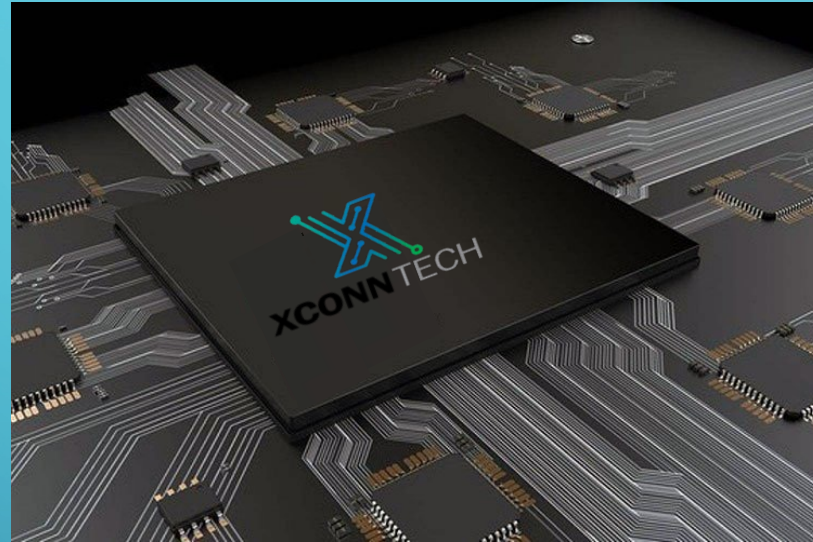
CXL ENABLES DRAM USAGE OPTIMIZATION



XCONN'S CXL 2.0 SWITCH

World's First CXL2.0
(XC50256) & PCIe 5.0
(XC51256) switch IC

2,048 GB/s total
BW with 256 lanes



Lowest port-to-port latency

Lowest power consumption/port

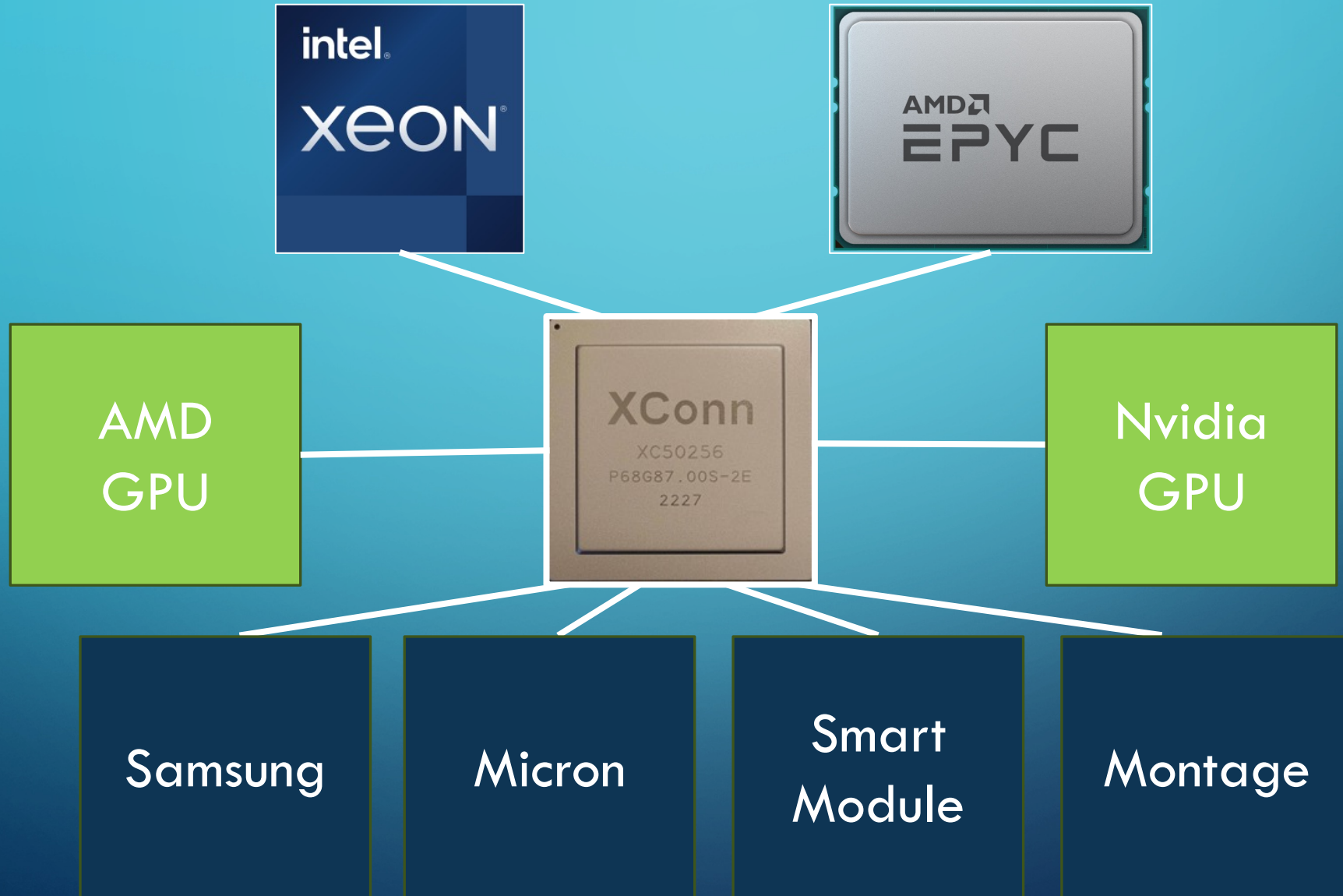
Reduced PCB area
Lower TCO

- Works with CXL 1.1 server processors, CXL memory devices
- Future compatible with the upcoming CXL 2.0 processors
- Works in hybrid mode (CXL/PCIe mixed)
- CS (customer samples) available now, MP 2Q24

XCONN APOLLO SILICON AND REFERENCE DESIGN BOARDS

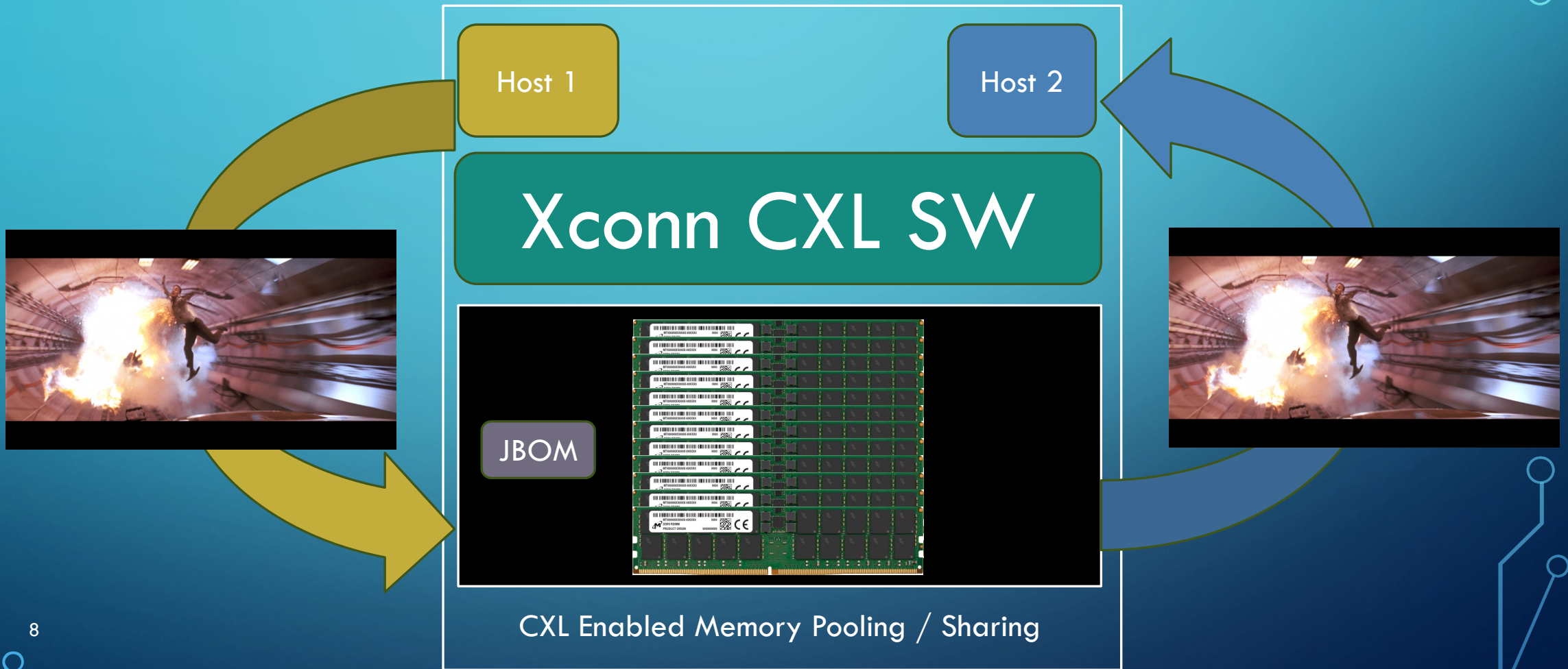


LEADING VENDOR INTEROP ECOSYSTEM



XCONN DEMO : BOOTH #751

PRE-STANDARD CXL COHERENT MEMORY SHARING



Address:

1245 S. Winchester Blvd
San Jose, CA 95128

Web:

<https://www.xconn-tech.com>

Email:

JP.Jiang@xconn-tech.com

krishna.mallampati@xconn-tech.com

